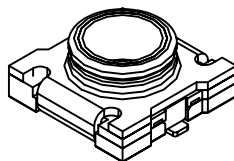
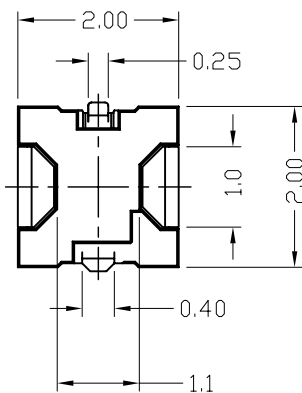
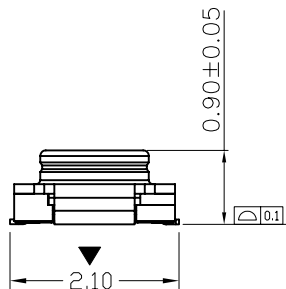
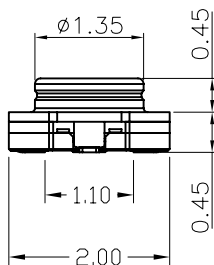
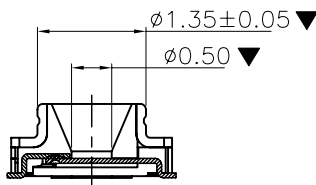
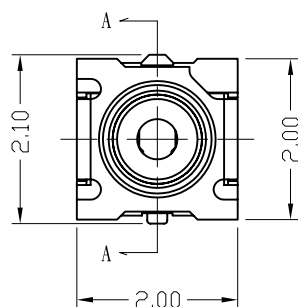




Signal In

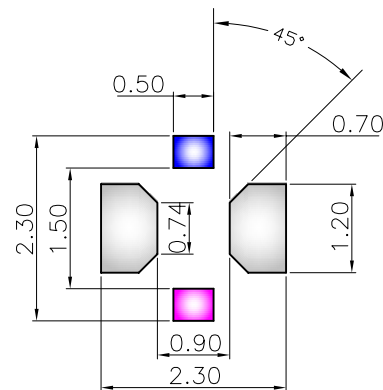


REV.	ECN NO.	DESCRIPTION	APPD	DATE
A		NEW DRAWING	CHEN	2014/01/13
B		加平面度要求(C, 3)	DANNY	2016/05/24
C		底部外型修改(B, 5)	DANNY	2017/05/25

THIS IS CAD DRAWING, DO NOT REVISE MANUALLY!!!

NOTE: UNLESS OTHERWISE SPECIFIED

1. DIMENSION SHALL BE INTERPRETED PER ANSI Y14.5M-1994.
2. DIMENSION WITH MARKED "▼" SHOULD SPECIFIED ON INSPECTION PLAN.
3. CONTACT MATING FORCE SHOULD NOT OVER 0.5N MAX.
4. CONTACT, SHELL MATERIAL: COPPER ALLOY.
5. INSULATOR: HIGH-TEMPERATURE PLASTIC UL94 V-0 / BLACK.
6. CONTACT FINISH : GOLD PLATED 1-5u", GRUND SHELL FINISH (GOLD FLASH), ALL OVER 30u" MIN NICKEL UNDER PLATED.
7. ALL MATERIAL MEET RoHS SPECIFICATION AND IN CONFORMITY WITH REACH & SVHC ATANDARD STIPULAIONS.



■ IN
■ OUT
■ GROUND

RECOMMEND STENCIL
 MASK PATTERN
 (MASK THICKNESS 0.10~0.12mm)

XX.X ± 0.20	B	設計發行	Chen 2014/01/13	P/NO	YMX07110X0
XX.XX ± 0.10		TITLE	Microwave RF SWITCH CONN H=0.90mm		
XX.XXX ± 0.02	SHEET	1/1	App. Date	Chk. Date	Drf. Date
.X" \pm	SCALE	1:1	Chen 2014/01/13	Chen 2013/12/25	Chen 2013/11/25
.XX" \pm	譽盛精密工業股份有限公司 Yue Sheng Exact industrial CO; LTD.				
.XXX" \pm					